



Super Capacitor Manual

Warranty



SC-1527



SC-1520

Dealer Stamp

Delivery date : _____



低碳動能開發股份有限公司

REDUCE CARBON ENERGY DEVELOP Co.,LTD.

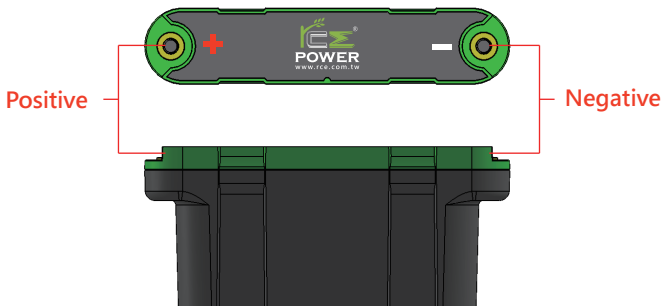
Tell:+886-2-2680-1999 Fax+886-2-2680-1313

Mail:service@rce168.com.tw Web:www.rce.com.tw

Address : 23854 新北市樹林區佳園路3段55號
No.55, Sec. 3, Jiayuan Rd., Shulin Dist.,
New Taipei City 238, Taiwan (R.O.C.)

■ SC-1520

Motorcycle Super Capacitor



- Product ID : SC-1520
- Capacity : 15V/20F
- Life cycle : Over 500,000
- Self-discharge current : <math><1\text{mA}</math>
- Applicable temperature : $-30^{\circ}\text{C}\sim+70^{\circ}\text{C}$
- Instantaneous current : 75A/15V/1S
- Dimension : 154mm*68mm*32mm
- Weight : 600g
- Warranty : 3-year

Note

- Please check the alternator before installation, if the output voltage is 15V we do not recommend you to install.
- Please follow the installation guide for the first time using.
- Please follow the manual and warning to avoid serious damage.
- Don't attempt to repair the product by yourself. Please contact with the technical person.
- This product must be recycled or disposed of separately from household waste. Don't incinerate the product. For information about recycling and replacement, please contact and refer to local law. Please do not put the battery into fire. It would cause the explosion.
- Slightly heat up during charging is normal.
- Please place the product in dry.
- This product can be damaged if dropped, burned, punctured, or crushed.
- Please follow the manual to make sure the product is used in correct and safety way.
- This product is for auxiliary use and might not activate if the original battery fails to discharge completely.
- Outside the Taiwan region, if you don't buy it through a local agent, you will not be liable for the warranty, please be responsible for it yourself.

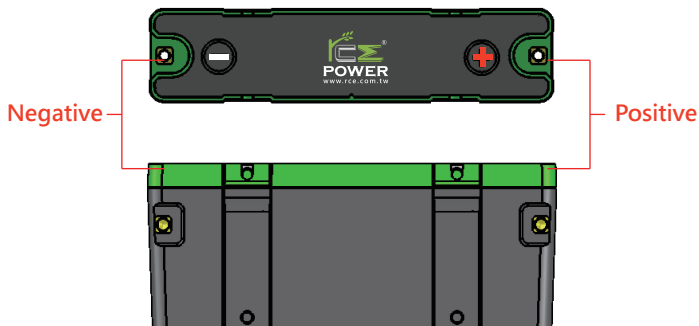
▲ Except for the following conditions, this product has a 3-year warranty under normal use:

1. Human-caused damage and inappropriate handling, such as external short circuit, impact, drop and flood.
2. Unauthorized disassembling and repair, and damaged tear-proof stickers on the side.
3. Cleaning the product with soap or cleanser.
4. The product is contacted with high temperature, fire or corrosive substance.
5. The product is damaged due to incorrect connection of the rescue cable to the positive/negative terminal.

▲ For more information, please call + 886-2-2680-1999

SC-1572

Car Super Capacitor

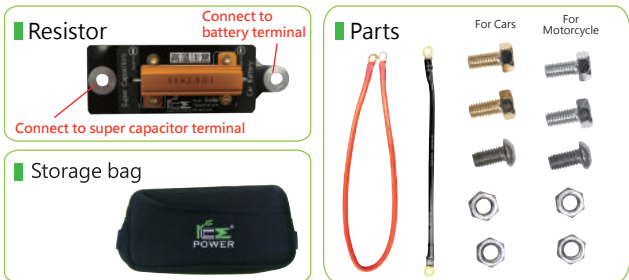


- Product ID : SC-1572
- Capacity : 15V/72F
- Life cycle : Over 500,000
- Self-discharge current : <2mA
- Applicable temperature : -30°C~+70°C
- Instantaneous current : 190A/15V/1S
- Dimension : 210mm*84mm*48mm
- Weight : 1000g
- Warranty : 3-year

Performance

- 1 · Upon activation, it can provide large instantaneous current to reduce the load and prolong the service life of starter battery.
- 2 · After activation, it can absorb instantaneous surge generated by the generator and provide steady voltage for the optimized operation of oil supply computer.
- 3 · It can constantly provide large instantaneous current for the ignition system to function effectively with best performance.
- 4 · It is the best choice for hardcore audio enthusiasts to improve the audio performance.
- 5 · Start-stop model which can effectively enhance starting capability and prolong battery life.
- 6 · It is equipped with ultra-low temperature starting capability such that it can be started even with the temperature at 20c.c below zero.
- 7 · It is equipped with the longest service life of 500,000 cycles.
- 8 · It is filled with Epoxy to ensure shockproof, waterproof, and high temperature resistance.

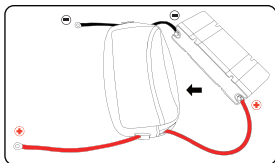
Accessories of production



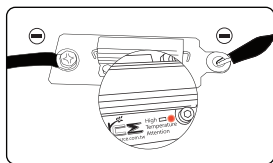
※Cables are 25cm and 50cm in random color.

Installation Guide

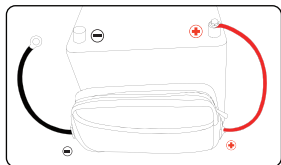
Step.1



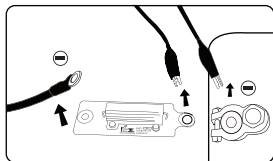
Step.5



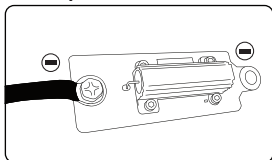
Step.2



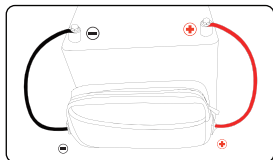
Step.6



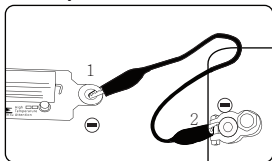
Step.3



Step.7



Step.4



- Step1 : After the positive and negative terminal are correctly connected, two eyelets wires will be penetrating out from both sides, and the super capacitor should be placed in the shockproof pack.
- Step2 : The positive electrode of the super capacitor should be fastened to the positive electrode of the battery.
- Step3 : Please make sure the capacitor is firmly fastened the connect the resistor to the battery.
- Step4 : The clamp should be connected to the resistor before being connected to the negative electrode of the battery.
- Step5 : When the red light of the correctly installed resistor is on, it indicates the super capacitor is being charged. When the red light is off, it indicates the charging of super capacitor is completed.
- ⚠️ The temperature of resistor will become rather high during charging. Do not touch it, or you may get burned.
- ⚠️ Please check the terminals of capacitor and battery if the red light on the resistor has been lit for a long time.
- Step6 : After the red light is off, the clamp and resistor can be removed. Be carefully not to touch the aluminum case of resistor because you may get burned due to the high temperature.
- Step7 : The negative electrode should be fastened to the battery to complete the installation. The super capacitor should be surely fastened to prevent it from being loosened during driving thus causing short circuit.

⚠️ Please handle super cap certainly to avoid short circuit.

⚠️ Charge time :

SC-1572: 10-12 minutes.

SC-1520: 2-3 minutes.

⚠️ For more information, please call +886-2-26801999